

Keeping users up-to-date on new data and functionality

## What's New at iMapData

### Just released...

**Nov 16, 2009** – iMapData announced enhanced global business data, including more in-depth coverage of businesses, particularly for China, India, Russia and the Middle East

**Nov 12, 2009** – High-resolution, contiguous imagery of the US and Western Europe now available on iMapData

**Nov 9, 2009** – iMap 7 introduced, ready to roll out on a client-by-client basis

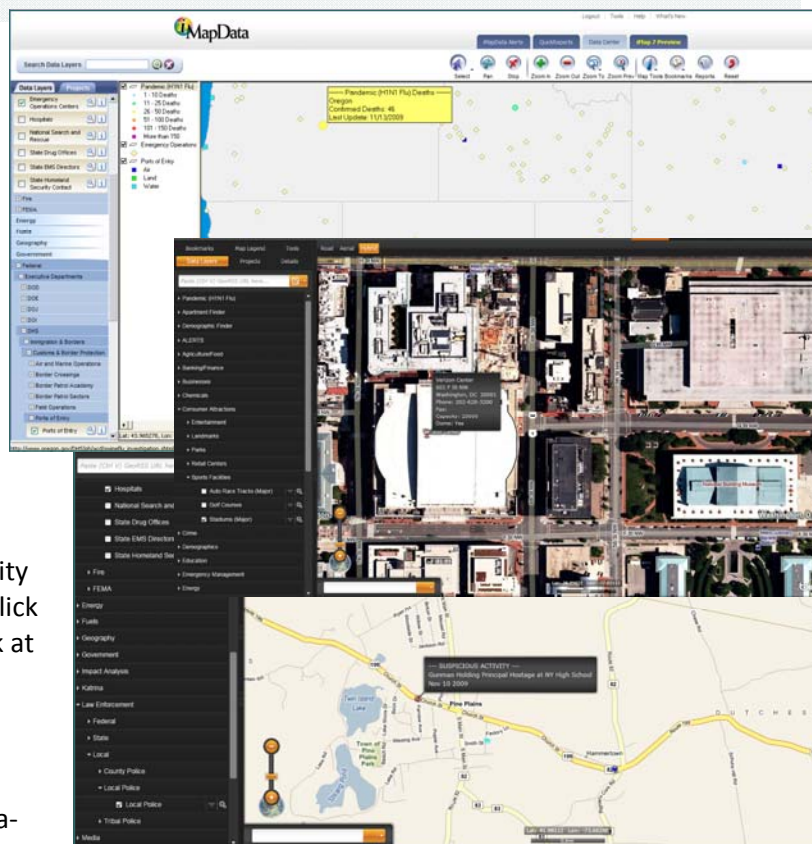
**Nov 1, 2009** – iMapData announced 22 updated databases for October

### New and Updated Data

**H1N1 Data**—each week iMapData updates the number of H1N1 confirmed deaths by US state, Canadian province and country

**Ports of Entry**—official locations where Customs and Border Patrol officers accept merchandise, clear passengers and collect duties

**Emergency Operations Centers** —location and contact information for Emergency Operations Centers



### Coming Soon



**iMap 7** - a state-of-the-art interface with high quality imagery, global mapping, and advanced functionality. Click on the **iMap7 Preview** tab and view the video for a peak at what's coming!

### Other Data Updated Recently

The iMapData data catalog continues to expand, both nationally and internationally. If you are interested in adding any datasets that are not currently on your site, please contact Kari Ramsby, [kramsby@imapdata.com](mailto:kramsby@imapdata.com), 703-720-5663.

County Business Patterns  
Unemployment Rates by County (August)  
Employment Rates by County (August)  
US House of Representative Members  
US Senate Members  
Major Airports Diagrams  
State Refugee Admissions

Biomass Resources  
Hydrogen  
National Concentrating Solar Power  
National Solar Photovoltaics  
National Solar Radiation Stations  
Wind Resource Potential

National Counterterrorism Center World-wide Incidents  
Religious Offices  
Canadian Mosques  
Percent Muslim Population by Country  
FAST and Nexus Locations  
USDA and FDA Offices

### Training and Support

For Customer Support/Passwords—Contact [support@imapdata.com](mailto:support@imapdata.com), 866-650-4627  
For Training — Contact Barbie Moroney, [bmoroney@imapdata.com](mailto:bmoroney@imapdata.com), 210-493-1022  
For Client Support — Contact Kari Ramsby, [kramsby@imapdata.com](mailto:kramsby@imapdata.com), 703-720-5663

